

July-December 2020:

Land Use Plan Update:

Since the summer, we have had a number of virtual community meetings, to go over the Land Use Plan (LUP) Update. We are on the final draft, after gathering as much input from Band members that we could.

Some highlights are:

- Will include a workplan and implementation plan, to be used in yearly/five-year strategic planning
- Requirement to report to yearly at our AGA; with what has been done, what is left and plans for completing the LUP
- Possibility of a RV site close to the TFF store
- Feasibility study to see if there is a possibility to have a RV Sani-Dump, for our People travelling long distances to come to our AGA, and for hunting, fishing, trapping and camping during the summer and fall

Will be brought to members for **ratification** in future.

Cemetery:

Bianca Prince and her spouse Bill Morris have been awarded the contract to complete the artwork for the columbarium unit, for Beaver, Moose, Frog, Bear, Wolf, Eagle, and Feather.

The Cemetery Blessing Ceremony has been postponed due to the passing of one of our Elders, our Una Sharon Solonas. 🌿 ♥

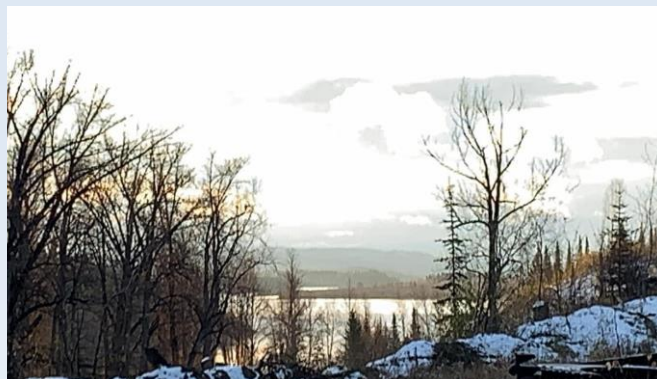
Land Management Department

Stephanie Rocheleau	landstewardship@mllib.ca (250) 750-6861
Tania Solonas	tsolonas@mllib.ca (250) 750-6860 (250) 988-1223

Udontl'oh (Fall)-Yask'eh (Winter)

REPORT TO MEMBERSHIP

Land Management



Tse'Khene Homeland



Tse'Khene Elder, Sharon Solonas

February 7th, 1954-October 2nd, 2020

Forever in our Hearts, Always on our Minds.



MLIB Enforcement Officers:

If you are interested in becoming a MLIB Enforcement Officer, please sign up with **Rachael Weber** at **(250) 750-4415**, as there are four seats for **Basic Security Training at MLIB** from **Nov 30-Dec 4, 2020**.

MLIB Enforcement Laws:

Passed on October 23rd, 2020 by Chief & Council following *MLIB Land Code, 2002*.

- *MLIB Trespass Law, 2020*
- *MLIB Enforcement & Prosecution Law, 2020*

This will help deal with trespass, poaching, illegal dumping, hunting of moose cows & calves, etc. on Band land.

Signage was put up Oct 2/2020 on main reserve and will be put up on remaining reserve in next year.

Vicious Dogs on Reserve:

There have been numerous complaints about an errant rottweiler in the main community. Letters have been issued for the caretakers of the dog to be removed, and there has been non-compliance. Further actions will be taken for the safety of our People.

In the summer there were two dogs removed because of bites and incidences. This action was taken to protect our Elders and Children.

Our Land Stewardship Director is working on updating the *Vicious Dog Bylaw, 1995* into an Animal Control Law.

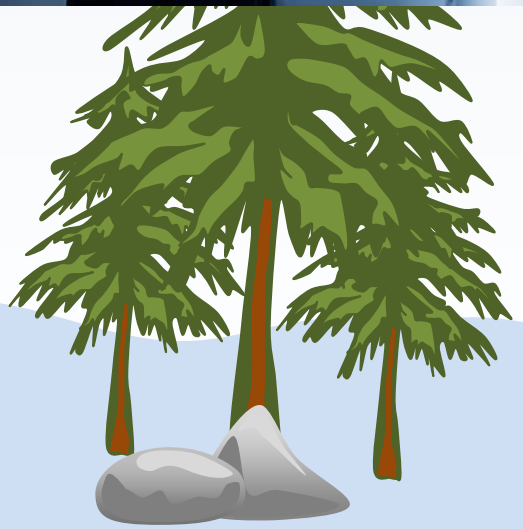
Udontl'oh (Fall)-Yask'eh (Winter)
REPORT TO MEMBERSHIP

Land Management



MLIB Trespass Signs

If you are interested in helping translate to Tse'Khene, please contact Tania @ (250) 988-1223.



Land Management Committee

- Sam Chingee
- Cheryl Chingee cherylch@telus.net
- Richard Jackson rick-n-naomi@hotmail.com
- Sonya Solonas sonyasolonas@hotmail.com
- Agnes Mastin agnessorrie@gmail.com